

First Steps

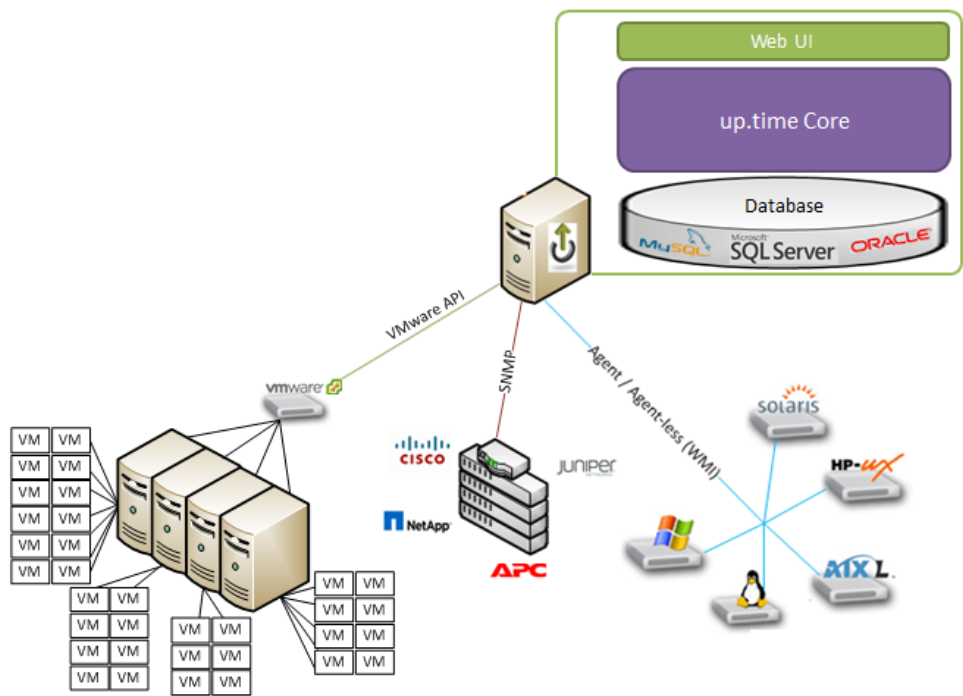
Install Uptime Infrastructure Monitor

To follow the learning modules in this guide, you should already have access to an Uptime Infrastructure Monitor instance that is installed on a [Windows](#) or [Linux](#) host that is acting as the Uptime Infrastructure Monitor *Monitoring Station*. This Monitoring Station should also have an [administrator account](#) set up, and a [license](#) that determines how many servers or network devices (*Elements* in Uptime Infrastructure Monitor) can be monitored.

A Quick Note on Deployment

This Monitoring Station may be in a staging, non-production, or production environment. Regardless, in order to follow the steps in this guide, you should be able to see and access the vCenter server, physical servers, and network devices that you plan on monitoring.

Additionally, you can run different Uptime Infrastructure Monitor functions from different Monitoring Station instances (for example, the Web interface can be run on a second instance, or the Uptime Infrastructure Monitor DataStore can be run on a dedicated database server). For simplicity, this guide assumes all of these functions are running on a single Monitoring Station.



Module List

Module	Description	Time required
Add Elements to Uptime Infrastructure Monitor	Use the Auto Discovery function to add one or more of a VMware vCenter inventory, an agent-installed Linux server, a Windows server, and a network device.	up to 4 slices
	Learn about configuring global settings to speed up Element additions.	up to 2 slices
	Review your inventory and view the Quick Snapshot page for different Element types.	up to 4 slices
Tour the Web Interface	Take a look at the different default Uptime Infrastructure Monitor dashboards	2 slices
Organize Services and Elements	Understand the relationship between service monitors and Elements, and how they are organized. Create a service monitor group and assign it to an Element. Create an Element Group and child groups to organize Elements.	3 slices
Organize Users and Views	Create a View that allows specific users access to a specific subgroup of Elements. Create a new user group and reassign a user to it.	4 slices

Generate Reports	Revisit the Quick Snapshot pages for Element types that you are monitoring. Generate and view sample reports.	3 slices
------------------	---------------------------------------------------------------------------------------------------------------	----------

Back: [Introduction](#)
Next: [Add Elements to Uptime Infrastructure Monitor](#)