

This user role is, for the most part, a "read-only" role, which is appropriate for the non-administrator **sample** user that is associated with it.

User roles imply access privileges, while user groups imply domain of use. The way users are managed, with the combination of user role and user group, is useful because it accommodates, for example, Linux admins of varying access levels.

Let's work with this pair of default up.time users, and make them match completely unique personas. They already each are associated with their own role; let's put them in unique user groups.

Create a New User Group

In the previous module, you created a top-level **Production** Element Group, along with **Linux Servers** and **Windows Servers** child Element Groups (in other words, you organized your servers first by function, then platform). Let's continue with this example, and turn the default **sample** user into a Linux server admin.

1. In the left pane, click **Add New User Group**.
2. In the **Add User Group** pop-up window, provide **Linux Admins** as the **User Group Name**.
3. Select the **sample** user from the **Available Users** list, then click **Add**.
4. Select **Linux Servers** from the **Available Element Groups**, then click **Add**.

Your user group configuration should look similar to the following:



A web of relationships

Due to an object-based approach, you can associate Elements, Element Groups, and Views with user groups, and vice versa. Later in this module, we will create a View, and associate it with the user group we are creating now. If we had created that View first, we would be able to make that association now.

Also note the Elements and Element Groups in the user group definition determine which Elements members of the group have "access" to. This is one way that user groups imply domain of use. This property works in conjunction with user roles: a user group determines what a user has access to, while the user role determines what they can do with the things they can access.

5. Click **Save**, then click Close **Window**. In the main UI window, the **Users** panel is displayed.

Validation: The user group you have just created includes the **sample** user. Conversely, from the user profile (and UI) perspective, the **sample** user is now a member of the newly created user group. Also note the double group membership for this user; this is a basic example of user-related objects.

up.time

Dashboards

My Portal

My Infrastructure

Services

Users

Reports

Config

Search up.time...

admin

SysList

Help

Users

View Users

Add New User

View Distribution Lists

Add New Distribution List

User Groups

View User Groups

Add New User Group

Notification Groups

View Notification Groups

Add New Notification Group

User Roles

View User Roles

Add New User Role

Users

Last Name	First Name	Username	User Group(s)	User Role
Administrator	up.time	admin	SysAdmin User Group	superadmin
User	Sample	sample	Linux Admins, SysAdmin User Group	user

Edit an Existing User's Profile

You now want to make this **sample** user an exclusive member of the **Linux Admins** user group. This means removing it from the default **SysAdmin User Group**.

1. Click the edit icon beside the **sample** user:

up.time

Dashboards

My Portal

My Infrastructure

Services

Users

Reports

Config

Search up.time...

admin

SysList

Help

Users

View Users

Add New User

View Distribution Lists

Add New Distribution List

User Groups

View User Groups

Add New User Group

Notification Groups

View Notification Groups

Add New Notification Group

User Roles

View User Roles

Add New User Role

Users

Last Name	First Name	Username	User Group(s)	User Role
Administrator	up.time	admin	SysAdmin User Group	superadmin
User	Sample	sample	Linux Admins	user

Edit

2. In the **Edit User** pop-up window, edit the user's group membership. Select the **SysAdmin User Group** entry, then click **Remove**.
3. Click **Save**, then click **Close Window**.
You are returned to the main UI window, where the **User** page is in view.

Validation: View the users list again, and note that the sample user's group membership is now back to a single user group: **Linux Admins**. This sample user is ready to administer some Linux servers!

Create a View

1. Click **My Infrastructure**.
2. In the left pane, click **Add View**.

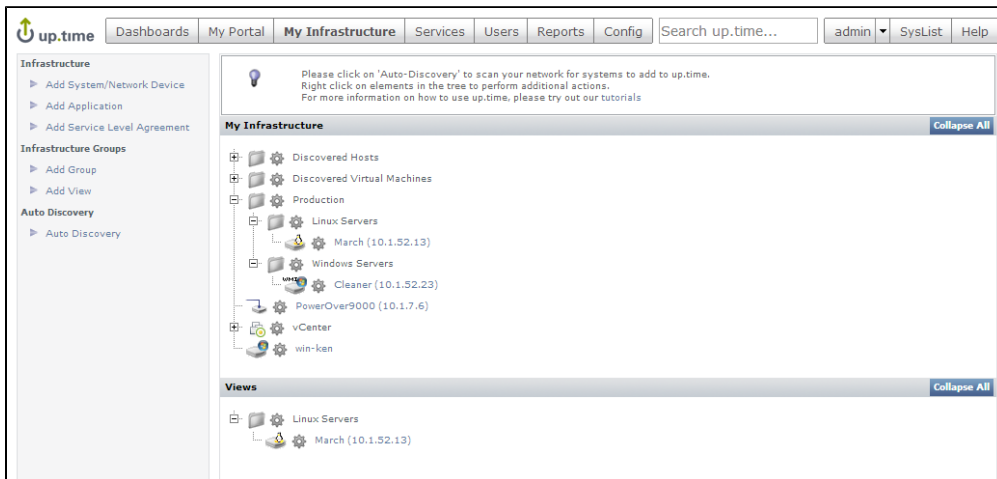
3. Configure your View as follows:

The screenshot shows the 'View' configuration window. The 'View Name' field contains 'Linux Servers'. The 'View Description' field is empty. The 'Available Element Views' list is empty. The 'Selected Element Views' list is empty. The 'Available Elements' list contains 'Linux Servers'. The 'Selected Elements' list contains 'March (10.1.52.13)'. The 'Available User Groups' list contains 'SysAdmin User Group'. The 'Selected User Groups' list contains 'Linux Admins'. The window has 'Cancel' and 'Save' buttons at the bottom right.

- Provide **Linux Servers** as the **View Name**.
- Select the **Linux Servers** Element Group from the **Available Elements** list, displaying the Linux server Element you added in the previous module.
- Select the Element and click **Add**.
- From the list of **Available User Groups**, select and **Add** the **Linux Admins** group.

4. Click **Save**, then click **Close Window**.

Validation Step (My Infrastructure): In the main UI window, the **My Infrastructure** view updates with your newly created **Web Servers** view. Expand it to see that its contents match what you added from the **Web Servers** Element Group.



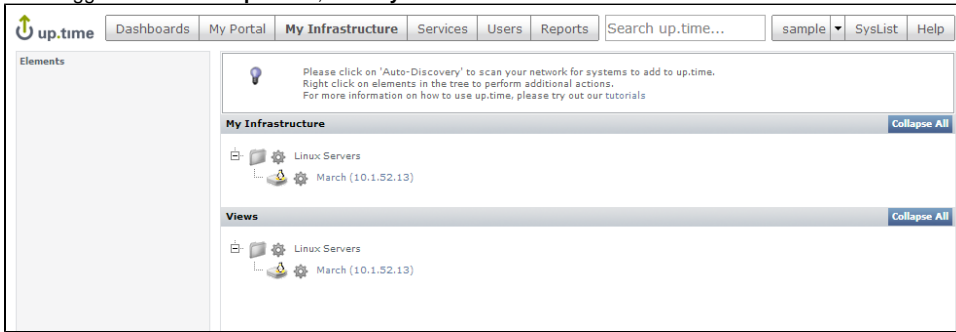
It's Not a Bug

Even though this created View is strictly for users that are members of the **Linux Admins** user group, and you are currently logged in as an administrator that is not a member, the View is still visible. An up.time administrator, who has the *superadmin* user role, will still be able to view everything.

Validation (as Sample User):

1. Click the logged-in **admin** user name (found along the top tool bar), then click **Logout**.

2. At the log-in screen, log in as the default **sample** user.
This sample user has an ID and password of `sample` and `sample`.
3. Once logged in as the **sample** user, click **My Infrastructure**.



Consider the following:

- You can see the View intended solely for the **sample** user.
- This **sample** user sees this View because you configured it to be associated with the user group that the user belongs to.
- The user can also see only the same Elements under **My Infrastructure** because, in the second exercise in this module, you configured the user group to include the **Linux Servers** Element Groups.
- As explored in the first exercise, this user's role limits activity to view-only tasks. To illustrate, if you click the gear beside an Element, you will not see an **Edit** option in the pop-up menu.
- The user cannot see anything else on the My Infrastructure panel, since they are administrative actions.

Using Views in conjunction with user roles and user groups can accommodate a diverse set of end users that have access to view, add, edit, or delete the correct Elements or up.time objects.

Before moving to the next module, log back in as the **admin** user (the ID and password were set when the Monitoring Station was first run after being installed).

Back: [Organize Services and Elements](#)

Next: [Generate Reports](#)