

# Add a VMware vCenter Server



Not planning to do this module? You can [skip to the next one...](#)

This module consists of the following exercises:

Module	Description	Time required
Add Your vCenter Server	Use Auto Discovery to import a VMware vCenter Server and its inventory of ESX servers and VMs.	1 slice
Validation Step 1: Explore the Monitored Inventory	Understand how up.time organizes an imported and synchronized vCenter Server inventory.	1 slice
Validation Step 2: View the vCenter Server Inventory	Understand how up.time allows you to focus on the parts of the vCenter Server that you actually want to monitor.	1 slice
Validation Step 3: View Metrics for the vCenter Server and a VM	View metrics available on a summary page for a vCenter server, as well as a VM.	½ slice

## Add Your vCenter Server

1. In the up.time Web interface, begin by clicking **My Infrastructure**.
2. Begin adding your VMware vCenter Server as an up.time Element. In the My Infrastructure view, click **Add System/Network Device**.
3. In the **Add System** window, select **VMware vCenter Server** from the **Type of System/Device** drop-down. This reveals configuration fields specific to this type of monitored Element.
4. Complete the fields similar to those below:

With up.time, a system (or element) can have a different display name than the hostname. This way, hostnames are stored in up.time but a meaningful name will be displayed in the application.

**Add System/Network Device**

Display name in up.time

vc5

Description

VMware vCenter Server, 5.1.0

Type of System/Device

VMware vCenter Server

Options

Host Name

vc5

Web Services Port

443

Username

vc\_admin

Password

\*\*\*\*\*

Group

My Infrastructure

**vSync Settings - Virtual Machines**

Collect Virtual Machine data

☒

Collect up.time Agent data

☐

Collect WMI Agentless data

☐

Notify on newly discovered VMs

☐

**vSync Settings - vSphere ESX Hosts**

Notify on newly discovered Hosts

☐

Cancel

Save

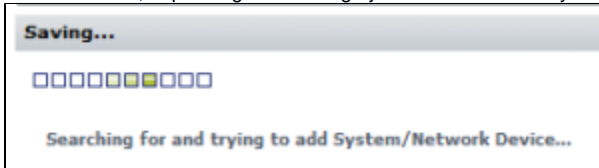
- The **Display Name** is used throughout the up.time interface, as well as reports.
- The **Description** can contain any extra information such as the version number or IP address.
- The **Options** fields tell up.time how to find and access your vCenter Server.
- You can leave the **vSync Settings** options at their defaults.



### Stick to the Basics

By default, the **Collect up.time Agent data** and **Collect WMI Agentless data** check boxes are clear. This means the metrics up.time retrieves for each monitored VM is what the vCenter Server itself collects and provides to up.time. For these "basic VMs," their metrics are a subset of what can be collected from the guest operating system using the up.time agent or using WMI. For simplicity in this guide, we will work with a "basic" vCenter Server inventory. You can learn more about agent- and WMI-based data collection in the next module, where you are adding physical servers.

5. Click **Save**. up.time will search for your vCenter Server and import its inventory of ESX hosts and VMs as up.time Elements. This can take a minute or more, depending on how large your vCenter inventory is.



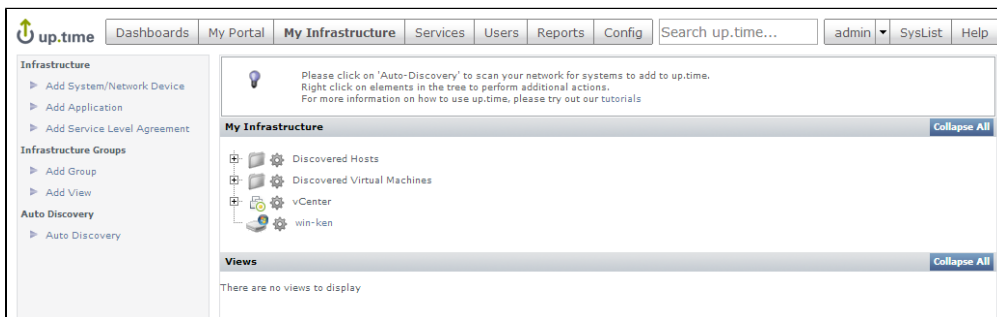
6. up.time will inform you when the vCenter Server has been added:



Click **Done** to close the **Add System** window.

## Validation Step 1 > Explore the Monitored Inventory

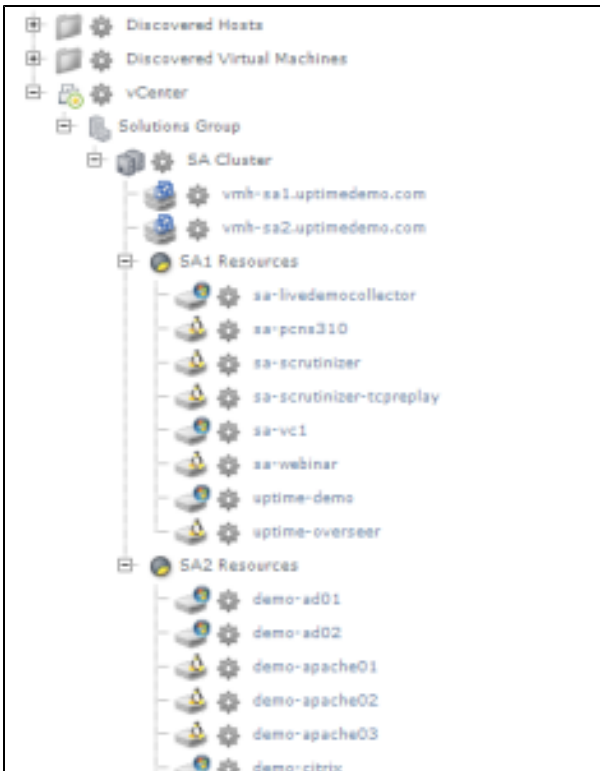
After adding the vCenter Server and closing the **Add System** window in the previous section, the main UI window is displaying the **My Infrastructure** view:



If you look at your up.time inventory, you can see that part of the vCenter Server import process included the automatic creation of two top-level *Element Groups* (which are folders and subfolders used to organize up.time Elements): **Discovered Hosts** and **Discovered Virtual Machines**. These Element Groups respectively include the ESX hosts and virtual machines managed by the vCenter Server, and these contents can be further rearranged in up.time, for example, by platform or server function.

Alongside this pair of Infrastructure Groups, the vCenter Server itself appears as a top-level Element in **My Infrastructure**. It includes the hierarchy of objects that comprise the vCenter Server inventory. Click the **+** icon beside your vCenter Server to expand its view.

Consider this example vCenter, which includes a datacenter:



In the above example, the datacenter's cluster of ESX hosts is organized into two resource pools, along with their component virtual machines. Hosts and virtual machines can be moved elsewhere in My Infrastructure, but the hierarchy remains intact as a reflection of the vCenter Server:



#### note

Depending on the size of your vCenter Server inventory, importing one could exceed your up.time license. If this were to happen, you might see the following:

- ESX hosts and VMs that you may have been expecting to see do not respectively appear in the **Discovered Hosts** and **Discovered Virtual Machines** infrastructure groups.
- Correspondingly, the expanded vCenter Server hierarchy may display empty datacenter objects. ESX hosts and VMs that are not monitored due to exceeding the license will not appear here, along with the vCenter Server objects to which they belong (for example, resource pools or clusters).

In this scenario, you need not worry. up.time has in fact imported these; it is simply ignoring them. We will learn more about this in the next section.

## Validation Step 2 > View the vCenter Server Inventory

This validation step can be particularly enlightening if your vCenter Server import exceeded your license, and resulted in ESX hosts and VMs being automatically excluded from the monitored inventory in up.time.

1. While in the **My Infrastructure** view, click the vCenter Server's gear icon, then in the pop-up menu, click **View**.
2. In the left menu, the **Info** tab is active. Click **Inventory Detail**. This displays a list of all of your vCenter Server's inventory, grouped hierarchically. It is divided into two main groups: Elements that are monitored by up.time, and Elements that are currently ignored. Initially, during the vCenter Server import, hosts and VMs that were imported after the up.time license was exceeded were placed in the **Ignored Elements** section. You can use this **Inventory Detail** view to ignore monitored Elements, and begin monitoring currently ignored Elements.



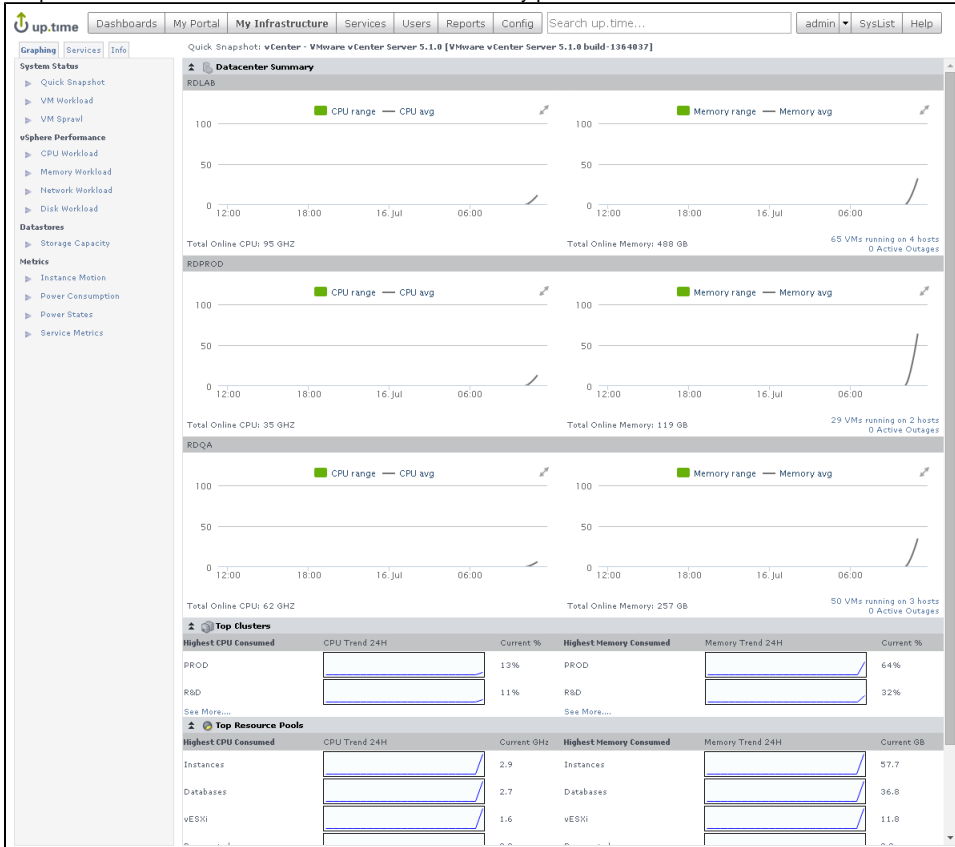
#### Pro Tip

You can also use this **Inventory Detail** view to **Enable Monitoring** for a vCenter Server Element. This can be done when an up.time agent is installed on a VM, allowing up.time to collect metrics that are more detailed than what is provided by the vCenter Server.

## Validation Step 3 > View Metrics for the vCenter Server and a VM

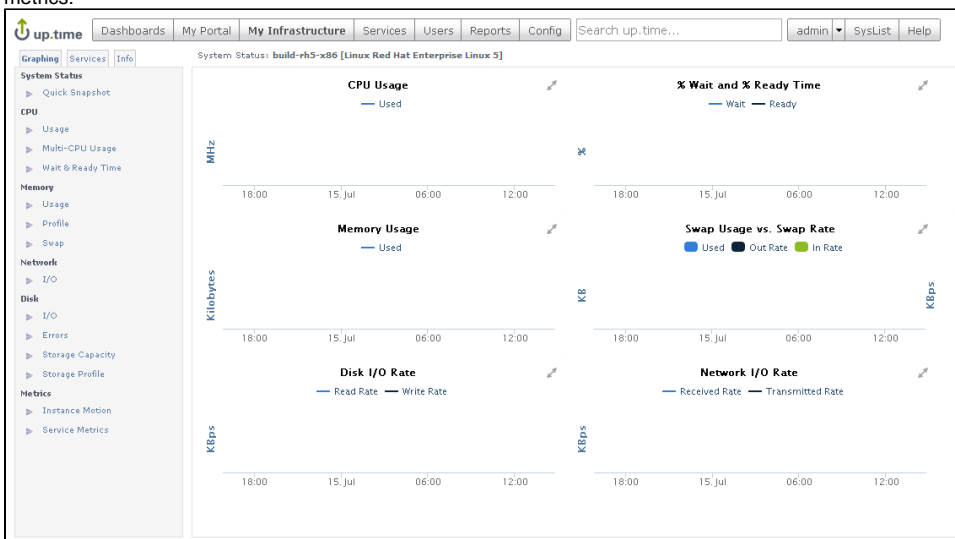
1. Click **My Infrastructure**.
2. Click the vCenter Server's gear icon, then in the pop-up menu, click **Graph Performance**. Whenever you take this action with an Element, you are taken to its **Quick Snapshot**.

Whenever you graph the performance of an Element from the **My Infrastructure** view, its **Quick Snapshot** is displayed. What exactly is shown depends on the type of Element, which we will see throughout this part of the Getting Started Guide. In this case, the vCenter Server's Quick Snapshot shows datacenter-level information that is directly pulled from the vCenter Server metrics:



You can incorporate these basic metrics into your up.time monitoring plans (such as alerts or reporting). It's more likely, however, that your interest will be with the virtual machines that are a part of the vCenter Server inventory.

3. Click **My Infrastructure** to return to the main inventory view.
4. Expand the **Discovered Virtual Machines** Infrastructure Group, and click the gear icon for any of the VMs. In the pop-up menu, again, click **Graph Performance** to display that Element's **Quick Snapshot**. This displays metrics for the VM that have been pulled from the vCenter Server's metrics:



As with the vCenter Server Element's metrics, you can incorporate these into your alerts and reports. However, this "basic VM" view allows you to work only with what the vCenter Server provides; there may be cases where you want to add a little extra "up.time power," and install an up.time agent on the VM. This is something you will learn a bit more about in the next module.



#### License Check!

In this module, if the inventory imported from vCenter Server exceeds open slots in your license, some of the inventory will have been ignored, and you will have no space left to add Elements to your monitored inventory. In the next two tracks In this Getting Started Guide, you will be adding servers and network devices. If you plan on following either or both of these tracks, you need to anticipate the number of servers and

network devices you will add. To follow the server track, you'll need at least 2; to follow the network device track, you'll need at least 1. The easiest way to free up space is to manually ignore VMs; each VM you ignore opens a license spot for a new Element.

Return to the Inventory Detail view for the vCenter (**My Infrastructure** > gear icon > **View** > **Inventory Detail**). Select VMs, ESX hosts, or even an entire cluster, then click **Add Selected Elements to Ignore**. That number of spots will be freed up in your license, which you can verify by clicking **Config** > **License Info**.

Alternatively, you can also contact [up.time Customer Support](#) to look into increasing the size of your license.

**Back:** [Add Elements to up.time](#)

**Next:** [Add Physical Servers](#)